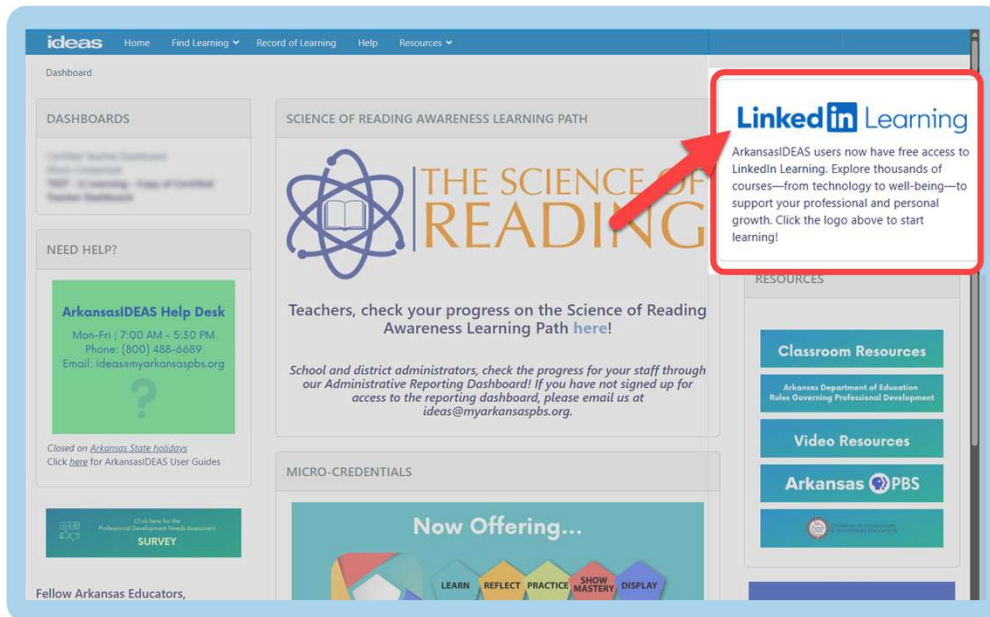




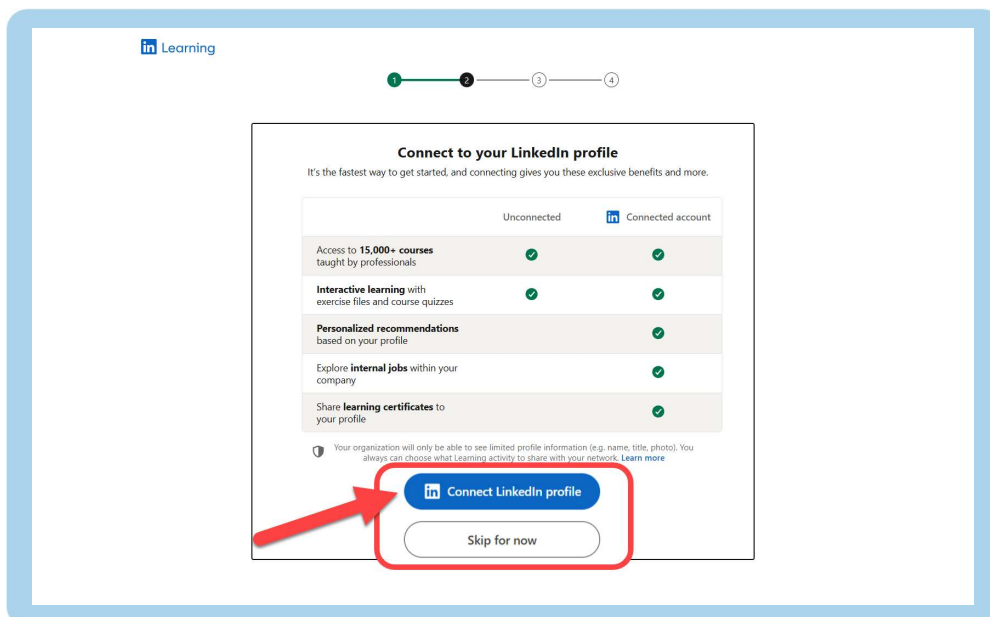
How to Log in and Use LinkedIn Learning from ArkansasIDEAS

DRAFT

- 1 After logging in to ArkansasIDEAS, select the LinkedIn Learning link.



- 2 Next, choose whether to connect your personal LinkedIn profile. Linking a personal account is not required. You may select *Skip for now*.



Slide 1

BW1 Will use PBS Sans if possible for this header

Benji Wilson, 2025-06-20T20:43:11.638

EY1 0 Do you need the font? To install on your computer?

Elizabeth Yates, 2025-06-23T13:26:32.366

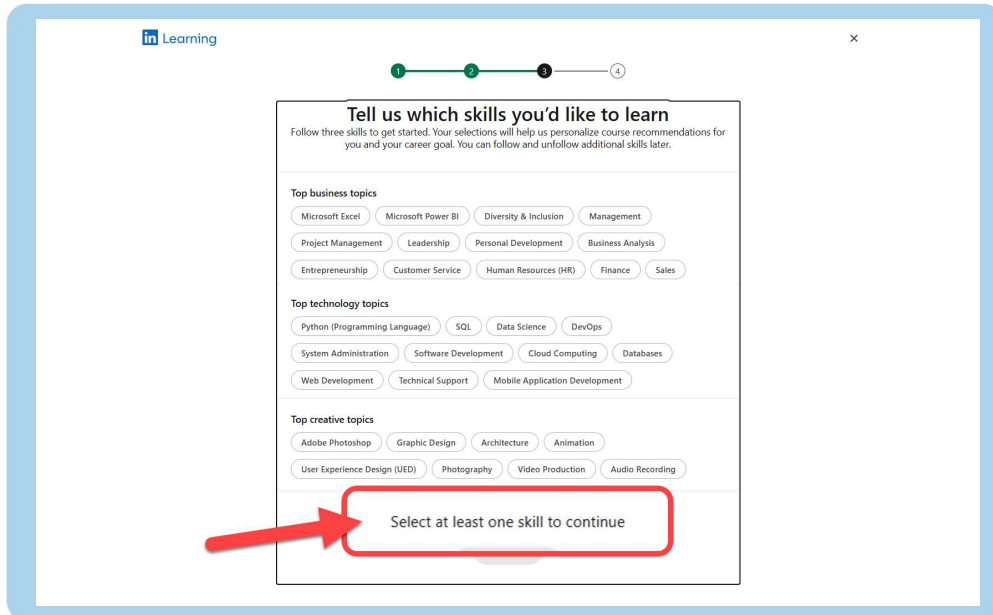
EY1 1 I think I have it somewhere...

Elizabeth Yates, 2025-06-23T13:26:41.070

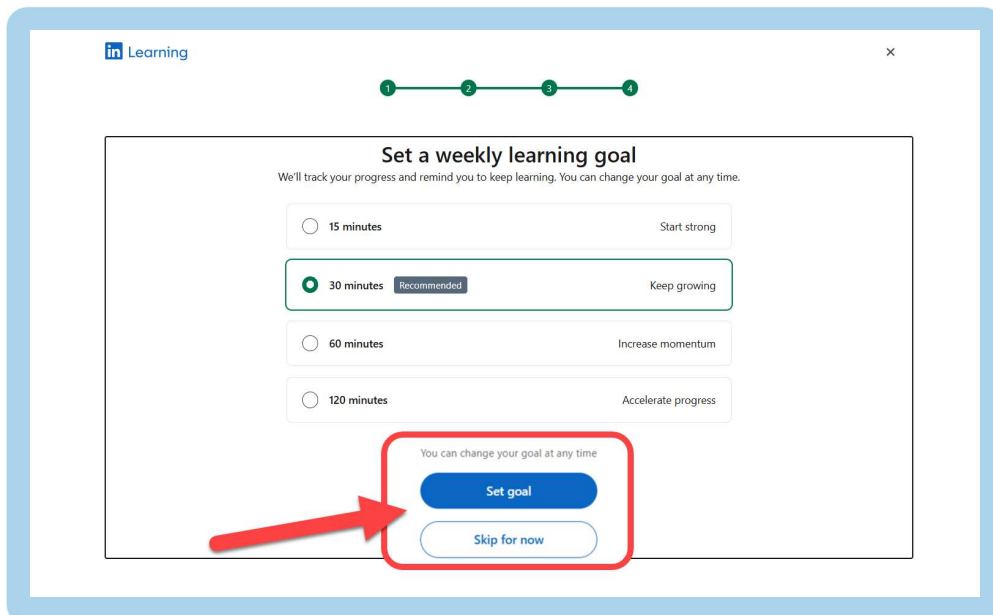
How to Log in and Use LinkedIn Learning from ArkansasIDEAS

DRAFT

- 3 Select at least one skill that you're interested in learning about.



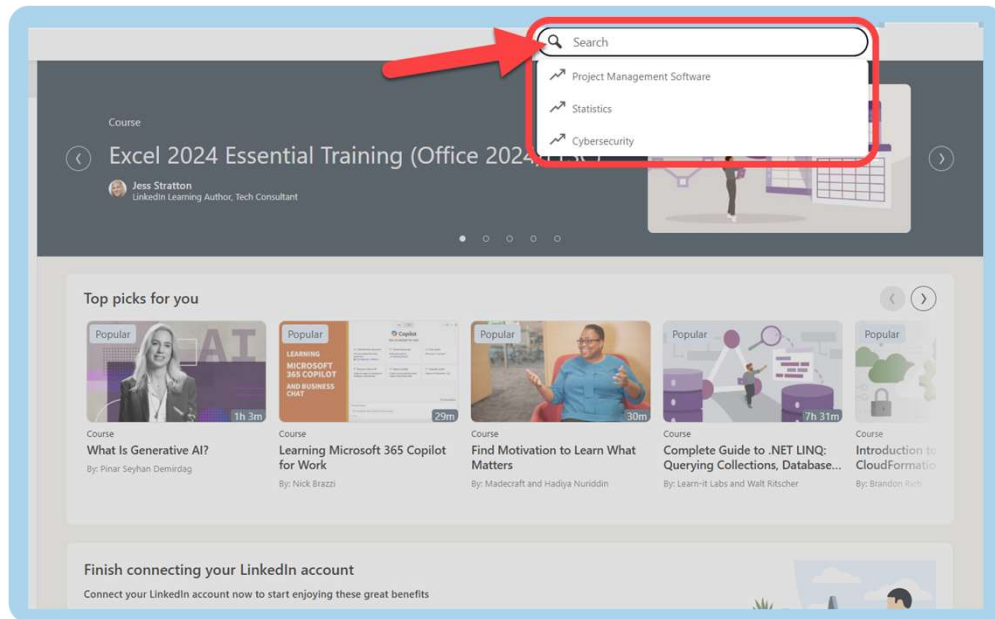
- 4 Set a learning goal or skip this step.



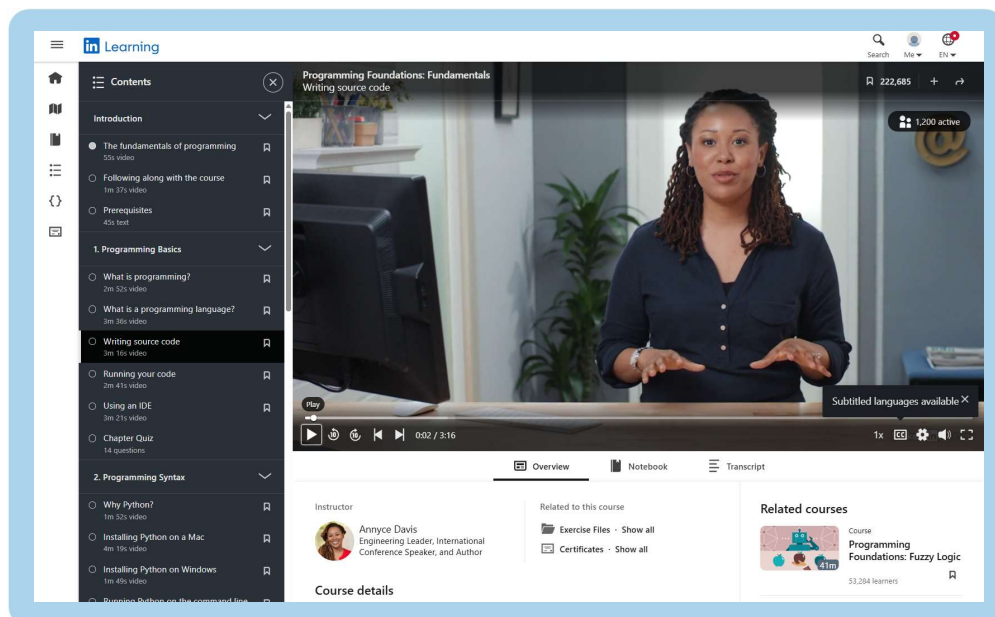
How to Log in and Use LinkedIn Learning from ArkansasIDEAS

DRAFT

5 Search for courses or topics that you're interested in.



6 View the course content and take quizzes to complete the course.

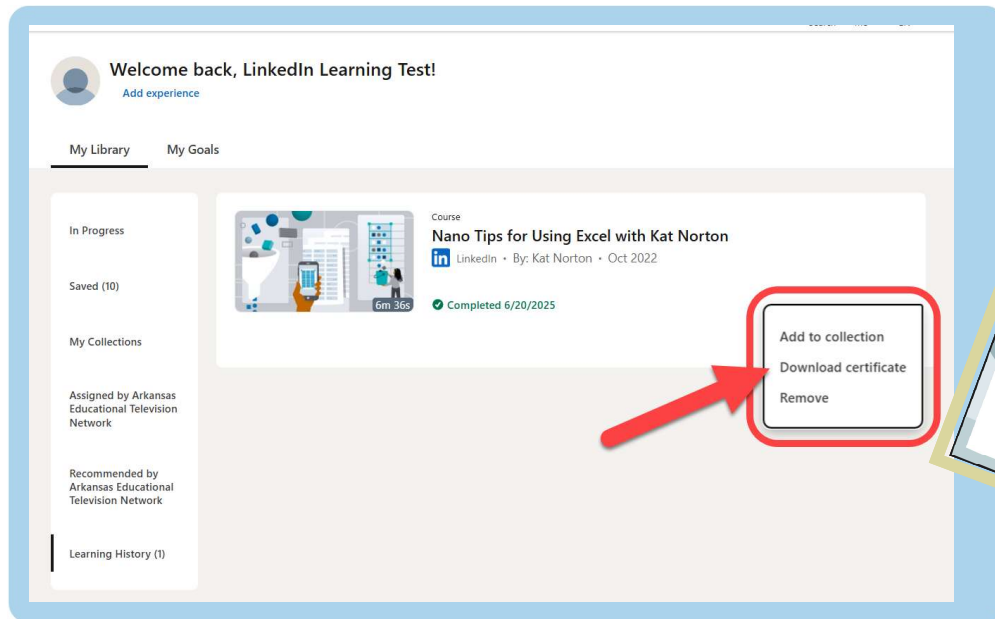


How to Log in and Use LinkedIn Learning from ArkansasIDEAS

DRAFT

5

Within LinkedIn Learning, go to Account > My Library > Learning History to download your course certificates.



i

Things to Know: EY3



Please remember that acceptance of professional development credit hours is solely at the discretion of the local school district or education agency. Contact your school/district leadership for additional guidance.



EY4

LinkedIn Learning certificates will not be stored in your ArkansasIDEAS account. Be sure to download and save your course certificates for your records.



LinkedIn Learning is provided as a free service to all users by the Arkansas Division of Elementary and Secondary Education and ArkansasIDEAS.

EY2

EY5



Connecting your personal LinkedIn account is optional. You are not required to link it to access LinkedIn Learning.

Slide 4

- EY1** Maybe start this one off with "Within LinkedIn Learning," to differentiate between trying to find the certificate in ArkansasIDEAS
Elizabeth Yates, 2025-06-23T13:15:45.109
- EY2** Division
Elizabeth Yates, 2025-06-23T13:17:49.160
- EY3** Love it!
Elizabeth Yates, 2025-06-23T13:18:05.208
- EY4** I think change to school/district and we should remove the reference to ask co-ops.
Elizabeth Yates, 2025-06-23T13:21:33.371
- EY5** I think change all users to Arkansas teachers... We're definitely giving access to the certified dashboard, but I'm not sure we are giving access to the non-licensed dashboard. I'll double check. Wait to change this, please!
Elizabeth Yates, 2025-06-23T13:22:46.265